

LESSO

LESSO

A Holding Subsidiary of Lesso (Stock Code: 2128.HK)

GUANGDONG LIANSU TECHNOLOGY INDUSTRIAL CO., LTD.

📍 Address: Liansu Industrial Estate, Longjiang Town, Shunde District, Foshan City, Guangdong Province

📞 Switchboard: 0757-23888333

📞 Service hotline: 400-168-2128

LESSO  
ROOF TILES

# CONTENTS

## — 01

### ABOUT US

/ Lesso Group

## — 02

### HONORS AND AWARDS

/ Qualifications and Honors

/ Product Testing Certificate

## — 03

### PRODUCT SYSTEM

/ Commercial

/ Residential

## — 04

### CLASSIC CASE

/ Classic Cases for Commercial

/ Classic Cases for Residential

# ABOUT US

## Lesso Group

Established in 1986, LESSO (Stock Code: 02128.HK) is a global leader in home furnishings and building materials. The Group’ s business portfolio spans plastic piping, building materials and home furnishings, environmental protection, new energy, supply-chain service platforms and others. It offers a wide range of products such as pipes, photovoltaics, plumbing and sanitary ware, integral kitchen materials, integral doors and windows, aluminum formwork and smart scaffolds, water purifiers, water-proofing materials and sealants, fire-fighting equipment, valves, cables, lighting, hygiene materials, items for environmental protection, agricultural facilities, and oceanic aquaculture cages. In 2023, LESSO’ s sales revenue reached over USD 4.38 billion.

ISince implementing a strategy of globalization and expanding its global presence, LESSO has evolved into a sophisticated multinational. It boasts more than 30 advanced production bases worldwide, broadening its industrial and sales networks to cover Asia, North America, South America, Europe, Africa, and Oceania. This enables LESSO to provide quality products and services for global customers in accordance with its continuously improved strategic layout in a timely and efficient way.

True to its idea of “Envisioning the Better, Building the Future” , LESSO remains committed to creating a better living environment, and advocating ideal cities featuring greenness, livability, and efficiency. With concerted efforts from various sectors, LESSO will fully play its role in sustaining healthy and beautiful space so that global residents could enjoy a comfortable life.

## Lesso Resin Tile

Lesso Resin Tile integrates the R&D, production and sales of new environmental-friendly roof building materials. Our main business includes roof building materials, heat insulation materials, and building anti-corrosion materials. The Group produces UPVC plastic tile, ASA synthetic resin tile, BIPV photovoltaic tile, lighting glazed tile, translucent lighting tile and other products.

The company boasts a highly experienced R&D team specializing in resin tile production, coupled with state-of-the-art equipment. With a vast production scale, we operate within a huge production workshop spanning 40,000 square meters. Our products have passed wider range of tests and are distributed worldwide. We have introduced advanced production techniques and formulations, establishing over 15 modern automated production lines, with an annual production capacity of 30,000 tons.



# HONORS AND AWARDS

## Qualifications and Honors



- AAA Level Trustful Enterprise On Contract Implementation Certificate
- Top Ten Products in China's Building Materials Industry



- Top 100 Excellent enterprises in China
- National stable qualified products
- China Energy Conservation and Green Environmental Protection Enterprise

## Product Testing Certificate





\_\_\_\_\_



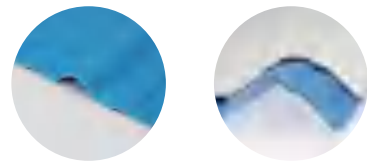
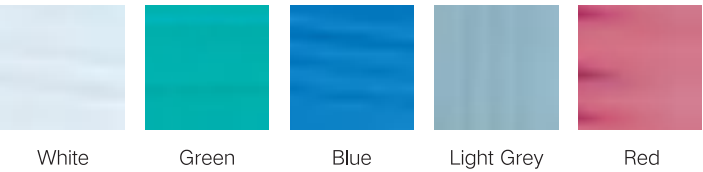
A photograph of a green corrugated metal roof, showing the characteristic wavy pattern of the material. The roof is set against a plain white background.



2 / UPVC ROOF SHEET

• Product introduction

Product introduction: This product is a new generation of permanent roofing material designed for factories with high insulation requirements. It adopts a three-layer structure design, including an anti-aging layer, insulation layer, and wear-resistance layer. It isolates the temperature of the factory roof, with excellent weather resistance, high strength, and acid-alkali resistance. It is a new type of product replacing traditional color steel tiles, zinc tiles, and aluminum tiles. It demonstrates remarkable effect when used as roofing materials in acid rain areas and anti-corrosion industries.



• Product features

- / Fire resistance - Oxygen index (OI) ≥ 32, classified as flame-retardant material;

/ Weather resistance - Due to the addition of UV-resistance agents in the material, the product resists ultraviolet radiation, resulting in a long lifespan;

/ Lightweight - Easy to install, with low costs for handling and transportation; Appearance - Bright and colorful;

/ Environmentally-friendly - No asbestos, and no release of carcinogenic substances.
- / Resilience - Impact-resistance , tensile-resistance , not prone to fracture;

/ Low noise - During rainfall, the noise is significantly lower compared to metal color steel plates, zinc tiles, and aluminum tiles, reducing noise by over 25dB.

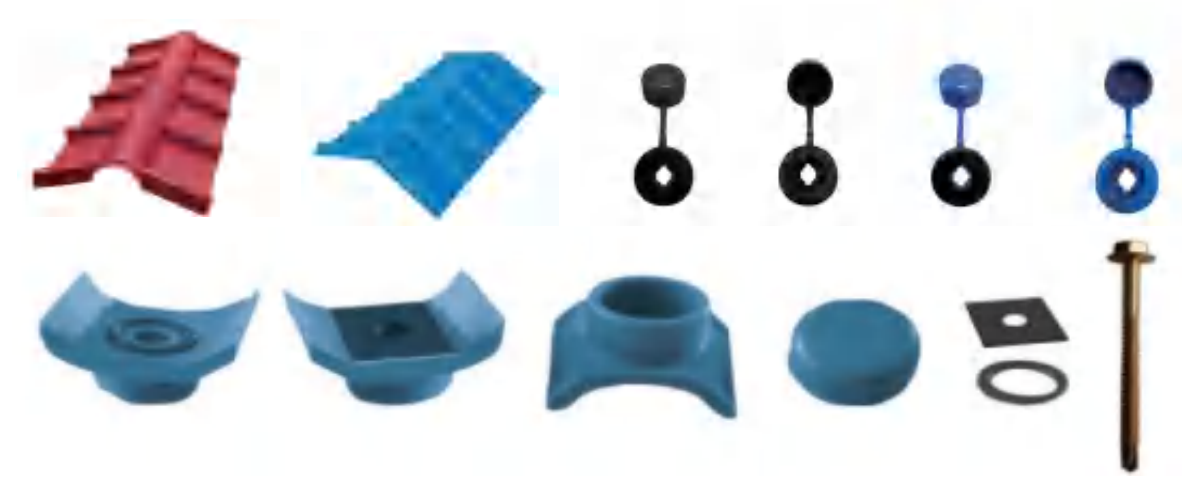
/ Acid and alkali resistance - Experimental evidence shows that there is no chemical reaction after soaking in various acid, alkali, and salt solutions for 24 hours. Applicable for areas prone to acid rain, chemical plants, mines, and coastal regions.

| Performance indicators                  | Test Method Unit                                              | Test results                                           |
|-----------------------------------------|---------------------------------------------------------------|--------------------------------------------------------|
| Rapture Strength                        | 800N                                                          | Sample without fractures                               |
| Freeze-Thaw Resistance (30 cycles)      | --                                                            | No cracks, hollows, bubbles, or peeling on the surface |
| Flexural Performance                    | Supportable span 800mm, load 40kg, allowable deflection ≤50mm | 35                                                     |
| Resistance to external blows            | 1 kg steel ball, 1.5m, free fall impact, no cracks            | Qualified                                              |
| Oxygen index                            | ≥32, flame retardant                                          | 36.3                                                   |
| Aging Resistance (Accelerated UV Aging) | --                                                            | Gray level: 3                                          |
| Chemical Resistance                     | --                                                            | No permanent corrosion or deformation                  |
| Dimensional Change Rate after Heating   | %                                                             | 1.5                                                    |

| Product parameters |                                                                                                                        |
|--------------------|------------------------------------------------------------------------------------------------------------------------|
| Length             | Customized, up to 13m                                                                                                  |
| Width              | Trapezoidal: 1130mm, 1360mm                                                                                            |
| Corrugated         | 1130mm                                                                                                                 |
| High Wave          | 1075mm                                                                                                                 |
| Little Tipova      | 1029mm                                                                                                                 |
| Thickness          | 1.5mm, 1.8mm, 2.0mm, 2.5mm, 3.0mm                                                                                      |
| Application        | Suitable for high-end factories, steel structure workshops, warehouses, agricultural markets, pathways, carports, etc. |



• Diagram of ridge tiles and waterproof accessories



Comparison Table of UPVC Anti-corrosion Insulation Tiles: YG Series vs. YF Series

| References   | YG Series | YF Series |
|--------------|-----------|-----------|
| Service life | 15-20     | 10-15     |

3 / ASA Superior Weather-Resistant Composite Tile

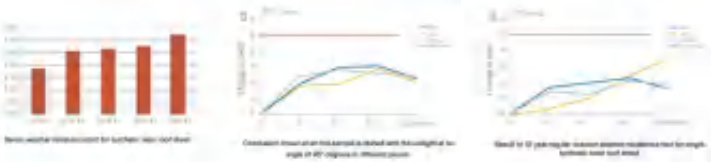
• Product introduction

This product is a four-layer super weather-resistance and anti-corrosive composite tile, with the surface layer made of ASA superior weather-resistance engineering resin. ASA is a terpolymer of Acry Lonitrile, Styrene, and Acrylate. It is internationally recognized as a high-performance engineering plastic with excellent weather resistance, chemical corrosion resistance, heat resistance (heat resistance temperatures up to 65°C), color stability, rich colors, and distinct levels of glossiness under light.



• Product features

Color Durability – The surface material of ASAPVC ROOF SHEET is made from imported ultra-high weather-resistance engineering resin. It exhibits exceptional durability in natural environments, maintaining color stability even under prolonged exposure to UV radiation, moisture, heat, and cold. Outdoor usage results from areas with intense sunlight exposure, such as Arizona and Florida in the United States, have proven that ten-year color change is guaranteed to be less than E<5.



Excellent corrosion resistance – ASAPVC ROOF SHEET can withstand long-term exposure to highly corrosive environments such as acids, alkalis, and salts. Experimental evidence shows that there is no chemical reaction after soaking in various acid, alkali, and salt solutions for 24 hours. It is highly suitable for use in areas prone to acid rain, chemical plants, and coastal regions.

Sound insulation – Provides effective sound absorption, reducing external noise such as heavy rain and strong winds by more than 25dB compared to color steel tiles.

Thermal insulation – ASAPVC ROOF SHEET has excellent thermal insulation properties, with a thermal conductivity coefficient of 0.29w/mk, which is 1/2000th of that of color steel tiles.

Excellent insulation performance – ASAPVC ROOF SHEET is an insulating product and remains undamaged even in the event of accidental discharge.

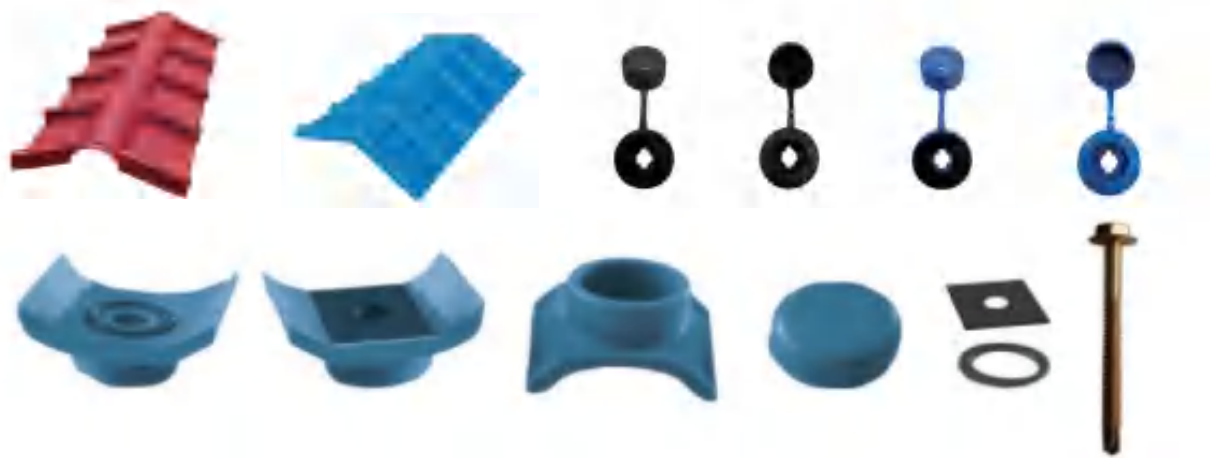
Outstanding weather resistance – ASAPVC ROOF SHEET withstands UV radiation, ensuring the product's exceptional durability.

Outstanding fire resistance – ASAPVC ROOF SHEET is classified as flame-retardant material, tested by national fire authorities according to GB8624-2006 standard, with fire performance > Grade B1.

Environmentally-friendly – ASAPVC ROOF SHEET does not contain asbestos or radioactive elements, and is recyclable, fully meeting environmental protection requirements.

| Product parameters |                                                                                                                        |
|--------------------|------------------------------------------------------------------------------------------------------------------------|
| Length             | Customized, up to 13m                                                                                                  |
| Width              | Trapezoidal: 1130mm, 1360mm                                                                                            |
| Corrugated         | 1130mm                                                                                                                 |
| High Wave          | 1075mm                                                                                                                 |
| Little Tipova      | 1029mm                                                                                                                 |
| Thickness          | 1.5mm, 1.8mm, 2.0mm, 2.5mm, 3.0mm                                                                                      |
| Application        | Suitable for high-end factories, steel structure workshops, warehouses, agricultural markets, pathways, carports, etc. |

• Diagram of ridge tiles and waterproof accessories




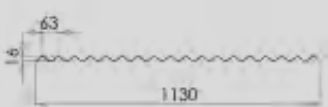
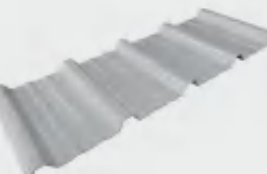
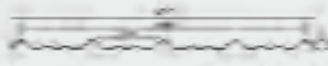
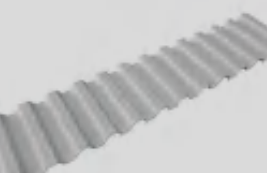



Comparison Table of ASAPVC ROOF SHEET: YG Series vs. YF Series

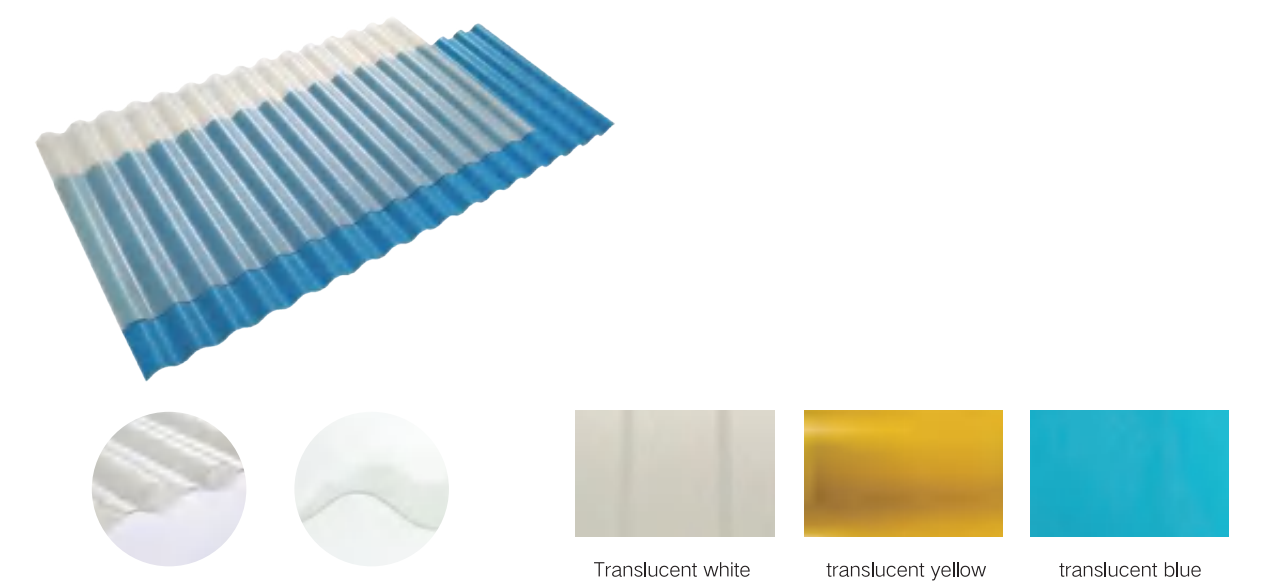
| References   | YG Series | YF Series |
|--------------|-----------|-----------|
| Service life | 25-30     | 15-25     |



General oscillograph

| Performance indicators                                                              | 瓦型              | Length                                                                                                                                                                                                                                                                                                                                                                                                                                                                                 | Width                                                                                                         | oscillograph                                                                         | Thickness                                          |
|-------------------------------------------------------------------------------------|-----------------|----------------------------------------------------------------------------------------------------------------------------------------------------------------------------------------------------------------------------------------------------------------------------------------------------------------------------------------------------------------------------------------------------------------------------------------------------------------------------------------|---------------------------------------------------------------------------------------------------------------|--------------------------------------------------------------------------------------|----------------------------------------------------|
|    | Trapezoidal     | Customized                                                                                                                                                                                                                                                                                                                                                                                                                                                                             | Trapezoidal 210-27<br>( 1130mm/1050mm )<br>( 1360mm/1260mm )                                                  |    | 1.0mm<br>1.5mm<br>1.8mm<br>2.0mm<br>2.5mm<br>3.0mm |
|    | Corrugated      | Customized                                                                                                                                                                                                                                                                                                                                                                                                                                                                             | Wave 63-16<br>( 1130mm/1030mm )                                                                               |    |                                                    |
|  | High Wave       | Customized                                                                                                                                                                                                                                                                                                                                                                                                                                                                             | High wave 176-40<br>( 940/880mm )<br>High wave 220-38<br>( 920/880mm )<br>High wave 250-37<br>( 1075/1000mm ) |   |                                                    |
|                                                                                     |                 | This wave profile is designed for factories where the ridge tile angle is flat, making it prone to backflow. With a wave height of 37 or above, which is 10mm higher than the normal one, it can better prevent backflow and reduce roof leakage.                                                                                                                                                                                                                                      |                                                                                                               |                                                                                      |                                                    |
|  | Small trapezoid | Customized                                                                                                                                                                                                                                                                                                                                                                                                                                                                             | Small trapezoidal wave<br>( 1029mm/960mm )                                                                    |  |                                                    |
|                                                                                     |                 | This wave profile represents a significant innovation in wall construction. It is an environmentally friendly, energy-saving, thermal insulation, moisture-proof, soundproof, and fire-resistant large plate wall. Its performance allows for easy cutting, assembly, and one-time forming, effectively addressing wall cracks. It can be seamlessly integrated with various frame structures, steel structures, and other types of structures, both domestically and internationally. |                                                                                                               |                                                                                      |                                                    |

4 / Supporting Lighting Tiles



| Product parameters |                                                                                                                                                       |
|--------------------|-------------------------------------------------------------------------------------------------------------------------------------------------------|
| Length             | Customized, up to 13m                                                                                                                                 |
| Width              | Trapezoidal: 1130mm, 1360mm                                                                                                                           |
| Corrugated         | 1130mm                                                                                                                                                |
| High Wave          | 1075mm                                                                                                                                                |
| Little Tipova      | 1029mm                                                                                                                                                |
| Thickness          | 1.5mm, 1.8mm, 2.0mm, 2.5mm, 3.0mm                                                                                                                     |
| Application        | Suitable for high-end factories, steel structure workshops, warehouses, agricultural markets, market pathways, light strips for carports, farms, etc. |



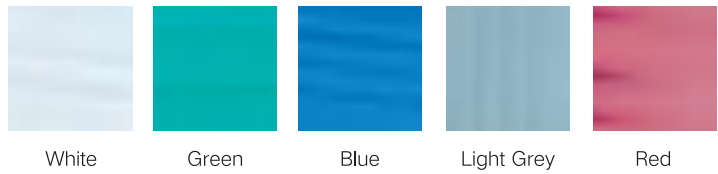


5 / UPVC Hollow Tile

• Product introduction

This product features a hollow design structure, offering superior performance in anti-aging, anti-corrosion, and thermal insulation compared to ordinary composite tiles. As a result, it has a longer lifespan, is less prone to fading, and provides better thermal insulation. The thermal insulation effect can differ by 10-15°C compared to regular anti-corrosion tiles, extending the product's lifespan. It also boasts a smoother surface finish, enhancing aesthetics, durability against acids and alkalis, and providing sound insulation.

Due to the stronger rigidity of UPVC hollow tiles compared to single-layer anti-corrosion tiles, the distance between purlins during installation can be ≤ 1200mm, directly reducing construction costs by less procurement.



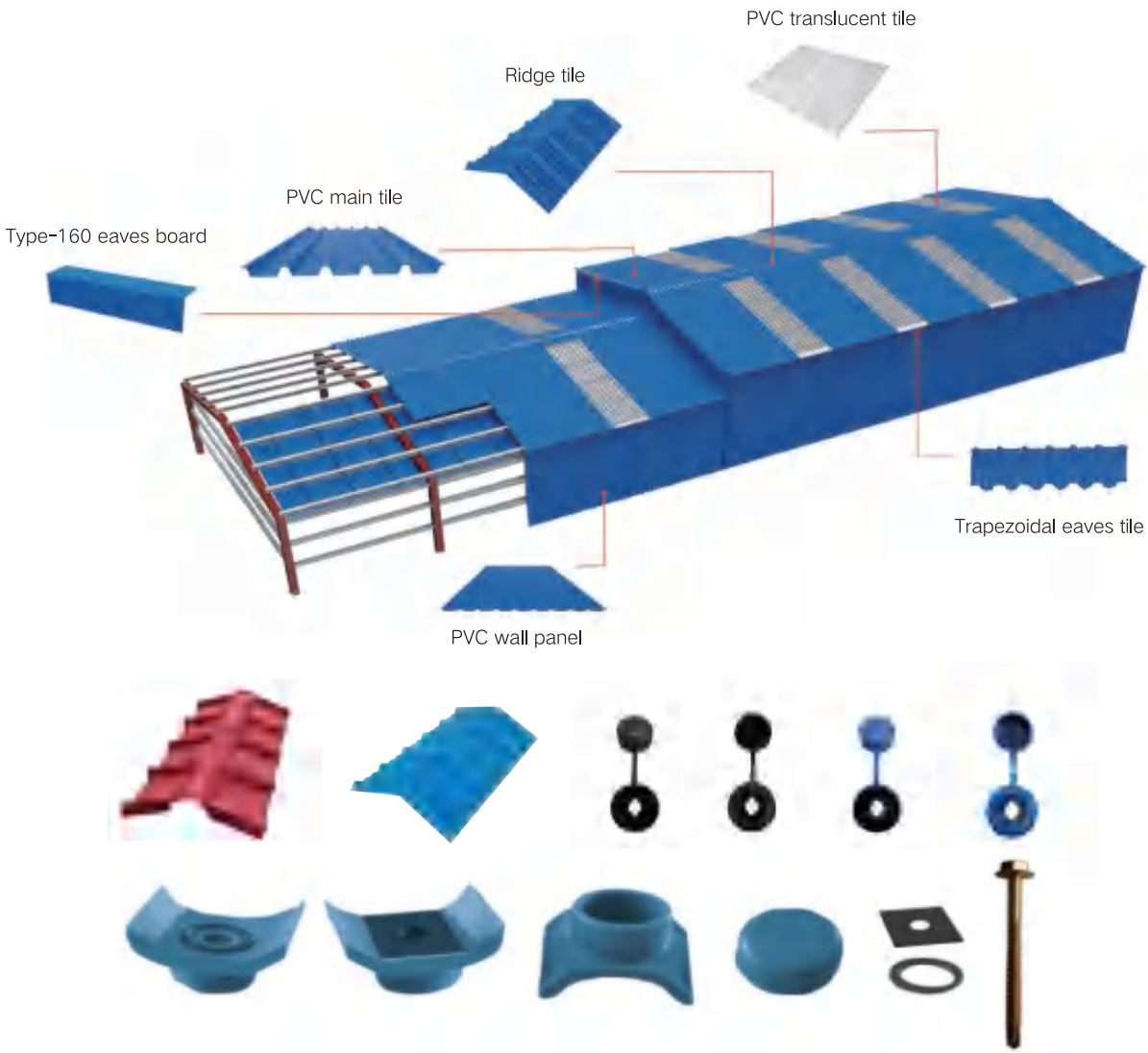
| Wave profile parameters |                                                                                                                        |
|-------------------------|------------------------------------------------------------------------------------------------------------------------|
| Length                  | Customized                                                                                                             |
| Width                   | 930mm                                                                                                                  |
| Effective width         | 875mm                                                                                                                  |
| Thickness               | 10mm                                                                                                                   |
| Wave spacing            | 217.5mmmm                                                                                                              |
| Wave height             | 40mm                                                                                                                   |
| Application             | Suitable for high-end factories, steel structure workshops, warehouses, agricultural markets, pathways, carports, etc. |

| Hollow tile oscillograph |
|--------------------------|
|                          |

Summary of Composite Structure Analysis for Series Tiles

|  | Number of layers | Hollow tile oscillograph                                  |
|--|------------------|-----------------------------------------------------------|
|  | Single layer     | UPVC SINGLE ROOF SHEET, Translucent                       |
|  | Two-layer        | UPVC Hollow Tile                                          |
|  | Three-layer      | UPVC ROOF SHEET, UPVC Hollow Translucent Tile             |
|  | Four-layer       | ASAPVC ROOF SHEET, Synthetic Resin Tile, Roman Roof Sheet |

• Installation Diagrams



PVC Series Installation Diagram

| Flat ridge tile<br>2000x300x300(mm)      | 90° eave seal drainage strip<br>40x15x15(mm) | J-type trim for wall panel<br>50x24x30(mm) |
|------------------------------------------|----------------------------------------------|--------------------------------------------|
|                                          |                                              |                                            |
| Type-160 eaves board<br>2000x160x140(mm) | Type-120 90° eaves board<br>2000x120x120(mm) | PVC façade flashing<br>1350x200x180(mm)    |
|                                          |                                              |                                            |

• Installation Instructions

1.For the installation of UPVC tiles, it is advisable to choose appropriate purlin spacing to prevent deformation, leakage, and cracking of the panels. Please refer to the following specifications:

| UPVC tile thickness (mm)       | Purlin spacing for herringbone roof (mm) | Purlin spacing for arch roof (mm) |
|--------------------------------|------------------------------------------|-----------------------------------|
| Thickness ≤1.3mm               | ≤600mm                                   | ≤800mm                            |
| 1.3mm<Thickness≤1.8mm          | ≤800mm                                   | ≤900mm                            |
| 1.8mm<Thickness≤3.0mm          | ≤900mm                                   | ≤1000mm                           |
| Hollow thermal insulation tile | ≤1200mm                                  | Not recommended                   |

2. Due to the much smaller wave height of circular wave tiles compared to trapezoidal wave tiles, two waves shall be overlapped horizontally for circular wave tiles, whereas only one wave is required for ordinary trapezoidal wave tiles. However, for buildings with spans exceeding 24 meters, it is recommended to use high-wave trapezoidal tiles. For circular wave tiles, three waves shall be overlapped horizontally. Otherwise, during heavy rain and wind, water may not drain properly from the tile surface, leading to leakage at the overlapping joints.


3. If self-tapping screws are used to fix the tile surface, the holes shall be drilled in advance, and the diameter of such holes shall be 2-3mm larger than the screw diameter. It is recommended to use expansion screws for convenience and efficiency.

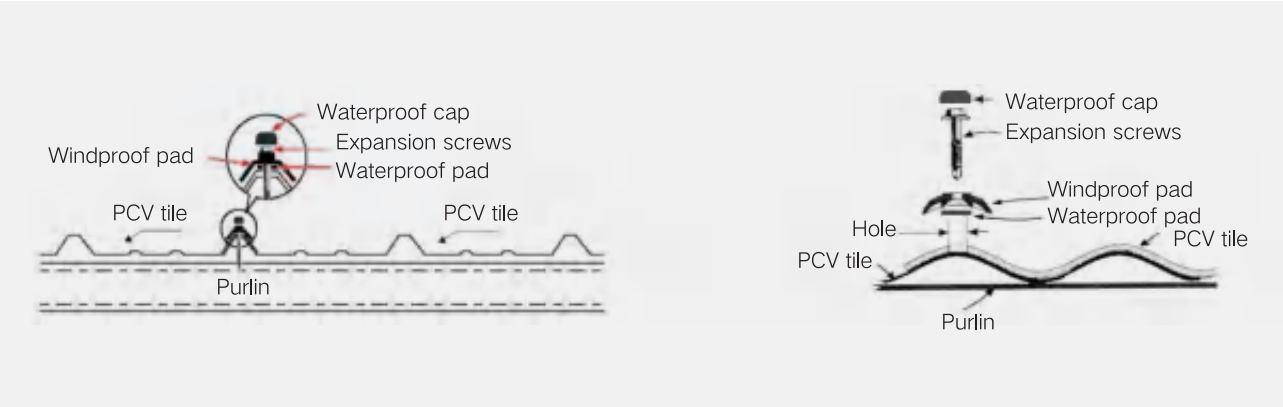
4. No matter what kind of corrugated UPVC tile is used, the screws shall be installed at the wave crest to prevent water leakage. It is recommended to install waterproof accessories when fastening the screws, as they can enhance waterproofing, wind resistance, and corrosion resistance at the screw positions.

5. When paving roof tiles, do not fix the screws from both ends and lock them in the middle. If both ends are fixed first, there is no room for tile expansion and contraction, which can easily lead to distortion of the tile surface. Instead, one end shall be fixed first, and then the tiles shall be laid in sequence to reduce stress on the tile surface, thereby extending the lifespan of the tiles.

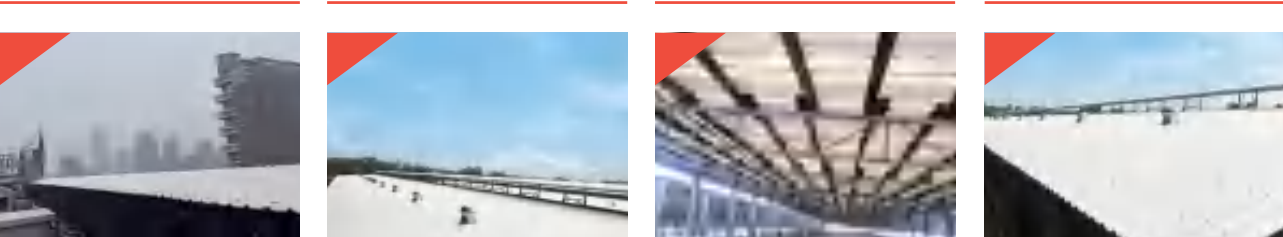
6. If the roof structure is in a 'V' shape, ridge tiles shall be installed on the roof. It is crucial to calculate the angle of the ridge tiles properly to avoid misalignment between the ridge tile angle and the roof ridge angle. Improper installation, such as forcefully tightening the screws due to misalignment, may lead to stress on the ridge tiles. Over time, this stress may cause fractures at the screw locations. Correct installation method: Place the ridge tiles first, adjust the horizontal position of the two slope surfaces through the ridge tiles, and then fix them in turn.

**Note:** For specific installation instructions, please consult the relevant technical personnel or refer to the installation specifications.





• Project Cases



Residential Products

6 / ASA Synthetic Resin Tile

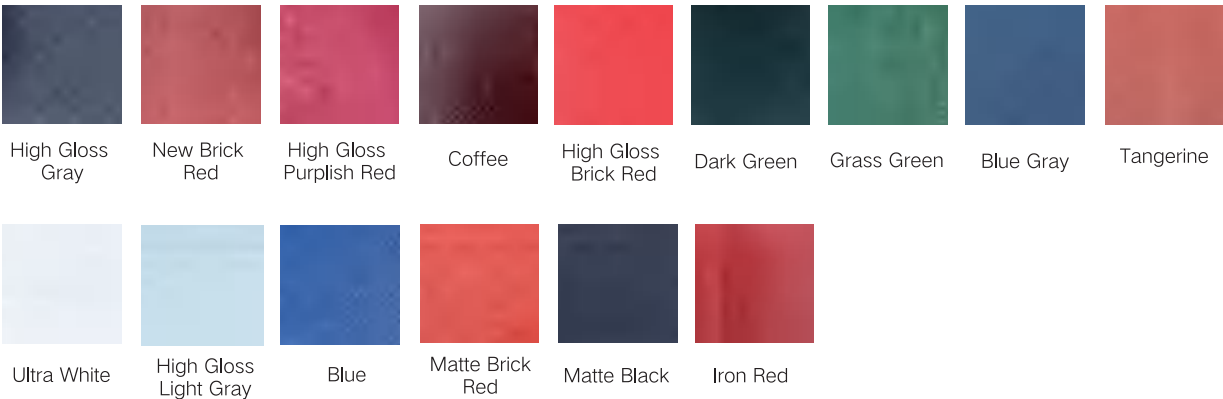
• Product introduction

Under the support of advanced production equipment and technology, ASA Synthetic Resin Tiles are refined with super-high weather-resistance engineering resin ASA and are innovated based on the experience of similar foreign products.

They boast rich colors that are long-lasting without fading, aesthetically pleasing with a strong three-dimensional sense, and in line with the distinctive characteristics of Chinese architectural culture. Additionally, they are lightweight, waterproof, durability, thermally insulating, soundproof, corrosion-resistance , wind and earthquake-resistance, hail-resistance, stain-resistance, environmentally friendly, fireproof, insulation, and easy to install. These tiles are an ideal material for permanent building roof decoration and waterproofing, providing a more convenient alternative to high-end roofing materials. They are particularly suitable for rural improvement projects and urban renovation in China.

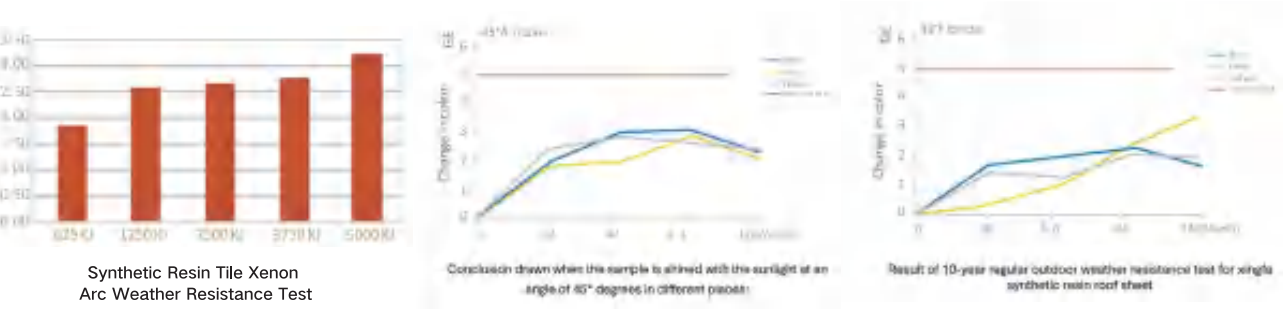






• Product features

/ Long-lasting Color: Despite prolonged exposure to harsh conditions such as ultraviolet rays, moisture, heat, and cold, the color maintains stable.



/ Good sound insulation: Effectively absorbs external noise from heavy rain, strong winds, etc.

/ Impact resistance: Withstands a 1kg steel ball falling freely from 3m without breaking.

/ Quick installation: High installation efficiency, minimal overlap loss, lightweight, easy to install and remove, complete installation accessories.

/ Stable volume: Expansion coefficient of 4.9x10mm/m·m/°C; accommodates temperature changes without significant dimensional changes.

/ Strong fire resistance: Tested by national fire authorities according to GB8624-2006 standard, achieving B1 fire resistance rating, classified as flame-retardant material.

/ Environmentally friendly: No asbestos, fiberglass, or radioactive elements; recyclable.

/ Excellent load-bearing capacity: Withstands a load of 150kg over a support distance of 660mm without cracking or damage.

/ Excellent corrosion resistance: No chemical reactions after immersed in salt, alkali, and various acids below 60% concentration for 24 hours.

/ Excellent self-cleaning performance: Resists dust adhesion, easily cleaned by rainwater to maintain a fresh appearance without patchy discoloration.

/ Excellent thermal insulation: Thermal conductivity of 0.325W/m.k, approximately 1/310 of clay tiles, 1/5 of cement tiles, and 1/2000 of 0.5mm thick color steel tiles.

/ Excellent waterproof performance: Dense and non-absorbent, eliminating the issue of water seepage through micropores.

/ Excellent insulation performance: Insulates against accidental discharge without damage.

| Product parameters |                                                                                                      |
|--------------------|------------------------------------------------------------------------------------------------------|
| Width              | 1050mm, 880mm                                                                                        |
| Thickness          | Customizable from 2.0mm to 3.0mm                                                                     |
| Effective width    | 1050mm/960mm, 880mm/800mm                                                                            |
| Length             | Customized according to the pitch, pitch length 219mm                                                |
| Wave height        | 30mm                                                                                                 |
| Wave spacing       | 160mm                                                                                                |
| Application        | Villas, resorts, gardens, pavilions, road landscape renovations, municipal renovation projects, etc. |



Comparison Table of ASA Synthetic Resin Tiles: YG Series vs. YF Series

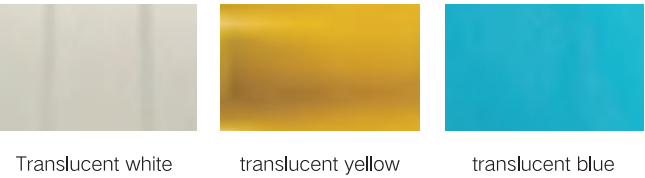
| References   | YG Series | YF Series |
|--------------|-----------|-----------|
| Service life | 25-35     | 20-25     |



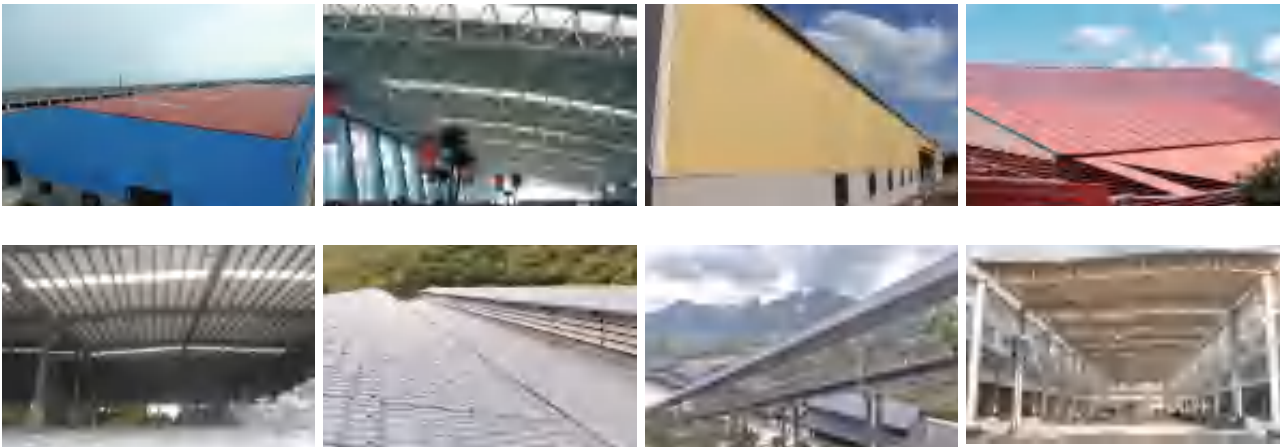
7 / Lighting Glazed Tile

• Product introduction

Under the support of unique processes, lighting glazed tile is made of polyvinyl chloride resin, supplemented with UV-resistant agents. It features a smooth and transparent surface, uniform and soft lighting, fire resistance, acid and alkali resistance, as well as resistance to organic solvents. It is suitable for lighting applications in various modern industrial plants, commercial markets, and greenhouses.



| Product parameters |                                                                                                    |
|--------------------|----------------------------------------------------------------------------------------------------|
| Width              | 1050mm                                                                                             |
| Effective width    | 960mm                                                                                              |
| Wave height        | 30mm                                                                                               |
| Wave spacing       | 160mm                                                                                              |
| Thickness          | 1.5mm, 2.0mm                                                                                       |
| Length             | Customized according to actual demands, pitch length 219mm                                         |
| Purlin distance    | 660mm-880mm                                                                                        |
| Application range  | Villas, farms, gardens, pavilions, road landscape renovations, municipal renovation projects, etc. |



8 / Roma Roof Sheet

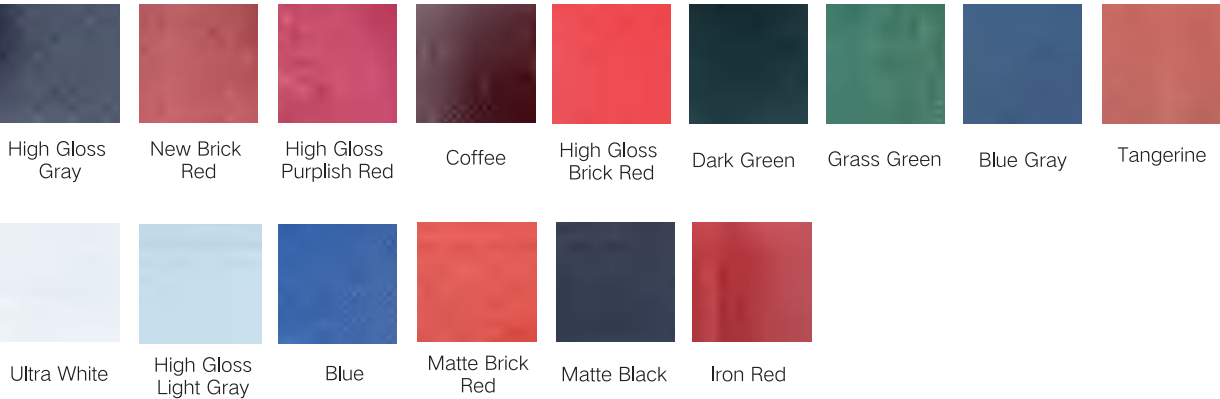
• Product introduction

Product introduction: It is developed to meet the waterproof and drainage requirements of different roof structures, as well as the need of European-style house design. It is suitable for areas with heavy rainfall. The large wave peak improves the effect of waterproofing. It also provides fast drainage and easy installation.

They boast rich colors that are long-lasting without fading, aesthetically pleasing with a strong three-dimensional sense, and in line with the distinctive characteristics of Chinese architectural culture. Additionally, they are lightweight, waterproof, durability, thermally insulating, sound-proof, corrosion-resistance , wind and earthquake-resistance, hail-resistance, stain-resistance, environmentally friendly, fireproof, insulation, and easy to install. These tiles are an ideal material for permanent building roof decoration and waterproofing, providing a more convenient alternative to high-end roofing materials. They are particularly suitable for rural improvement projects and urban renovation in China.



Features: Improved waterproofing and fast drainage



| Product parameters |                                                                                                    |
|--------------------|----------------------------------------------------------------------------------------------------|
| Width              | 1050mm                                                                                             |
| Thickness          | 2.0mm~3.0mm                                                                                        |
| Effective width    | 960mm                                                                                              |
| Length             | Customized based on the pitch                                                                      |
| Wave height        | 55mm                                                                                               |
| Pitch              | 328mm                                                                                              |
| Purlin distance    | 656mm-984mm                                                                                        |
| Application range  | Villas, farms, gardens, pavilions, road landscape renovations, municipal renovation projects, etc. |

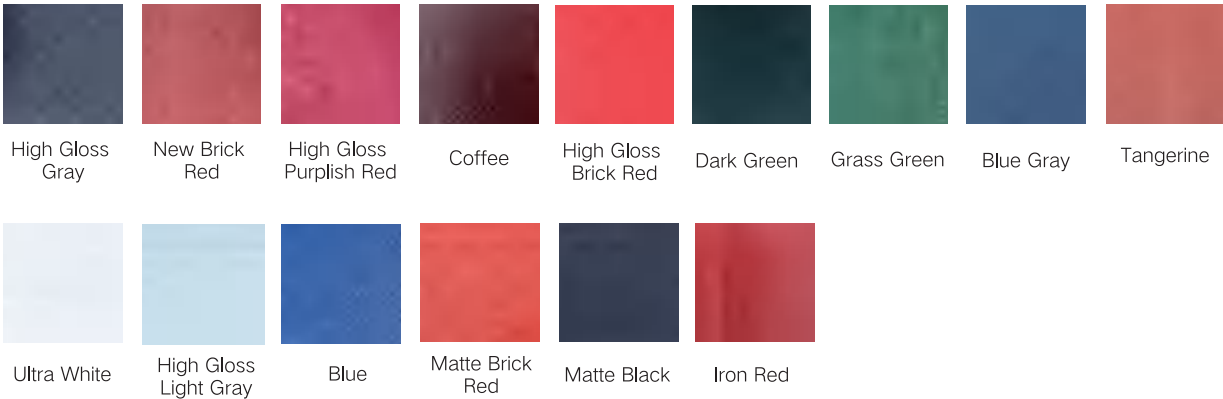


9 / Antique One-Piece Tile

• Product introduction

Product introduction: The antique one-piece resin tile is a practical and innovative resin tile, characterized by its light weight, resilient and flexible structure, easy installation and maintenance, reduced manufacturing costs, cost-saving benefits, multiple reusability, and no harmful impact on the wall surface even after long-term use. This helps avoid wall collapse under long-term pressure, making the boundary wall more durable. Compared to conventional methods, the antique one-piece tile excels in its integrated molding structure, allowing direct bonding to the top of boundary walls with cement mortar. This not only simplifies the construction process but also significantly improves construction efficiency. It reduces construction costs and enhances the uniqueness and aesthetics of the wall, achieving an antique appearance.

Features: Integrated molding, antique appearance



| Product parameters    |                                                                  |
|-----------------------|------------------------------------------------------------------|
| Width                 | 1050mm                                                           |
| Thickness             | 2.3mm-3.0mm                                                      |
| Product specification | 1050mm×300mm, 400mm, 500mm                                       |
| Application range     | Villas, farms, gardens, pavilions, municipal renovation projects |



• Installation Display



| Main tile                                                                             | ② Main Ridge tile                                                                     | ③ Tilted ridge tile                                                                   | ④ Flat tile head                                                                      | ⑤ Three-way                                                                           |
|---------------------------------------------------------------------------------------|---------------------------------------------------------------------------------------|---------------------------------------------------------------------------------------|---------------------------------------------------------------------------------------|---------------------------------------------------------------------------------------|
|   |   |   |   |   |
| ⑥ Four-way                                                                            | ⑦ End tile head                                                                       | ⑧ T-type three-way                                                                    | ⑨ Antique/drip tile                                                                   | ⑩ Yin angle drainage tile/sink                                                        |
|  |  |  |  |  |
| ⑪ ⑫ Left/right eave sealing tile                                                      | ⑬ 120° front wall drainage tile                                                       | Resin tile waterproofing accessories                                                  |                                                                                       | Screws                                                                                |
|  |  |  |                                                                                       |  |

• Installation instructions





# CLASSIC CASE

## Classic Cases for Commercial



## Classic Cases for Residential

